



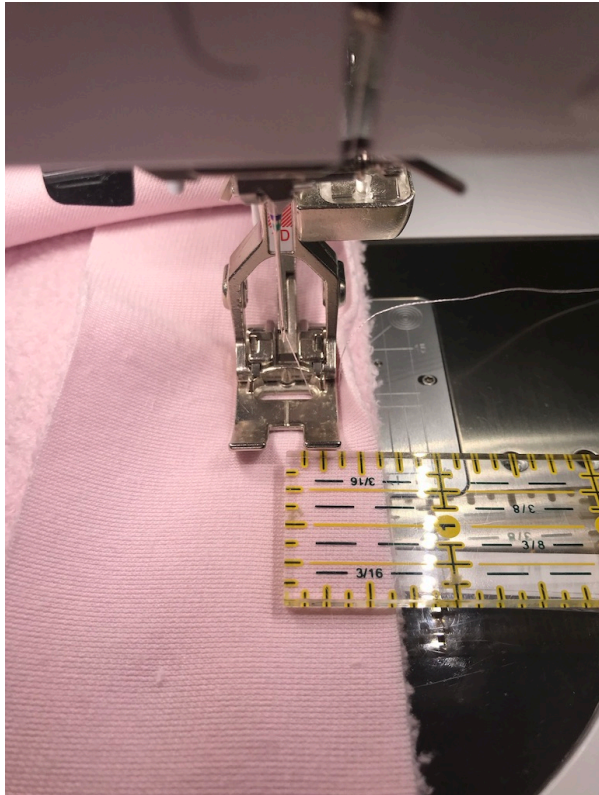
Binding with Fireside ~ A Blue Barn Quilt Co. Tutorial

Measure the perimeter (outside edge) of your quilt. For example if your quilt is 50" x 75" your perimeter would be $50+50+75+75=250$ ".

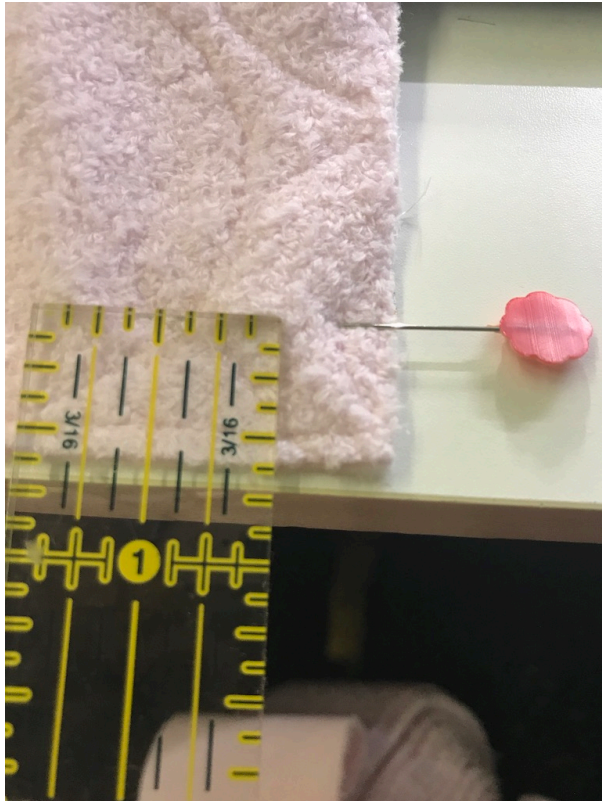
Fireside is 60" wide, so you would need 5 strips for this quilt. Cut your strips 2 ¼" wide and join them with a diagonal seam. Fireside does have a nap, so make sure you join them all the same direction.



The strips get sewn onto the back of the quilt. Match up the raw edges and use a $\frac{5}{8}$ " seam allowance. It helps to use a walking foot if you have one! To begin, leave a tail of about 12" to 15". Use your regular stitch length.



As you are approaching the corner, stop $\frac{5}{8}$ " before the edge (I mark it with a pin so that I can see where to stop. Backstitch.



Take the binding and fold it up 45 degrees, so that the right side matches up straight. Fold it back down so that the top where the fold is matches up with the top edge. The right edges will line up again.



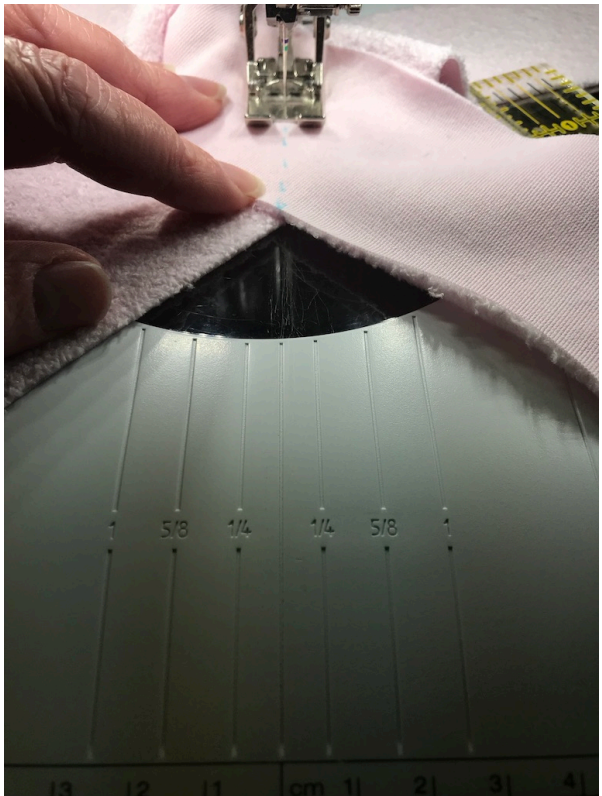
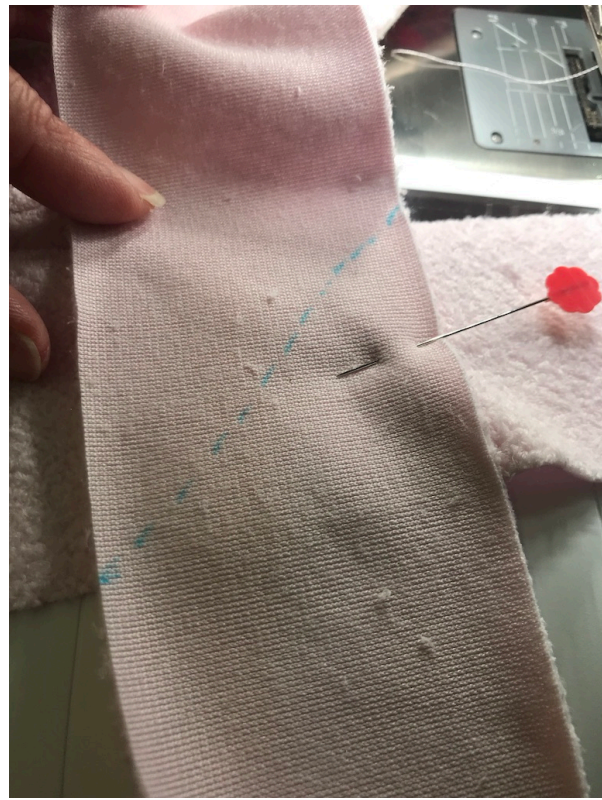
Keep sewing around the whole quilt and do the same at all 4 corners. Stop and leave about a 12" opening.



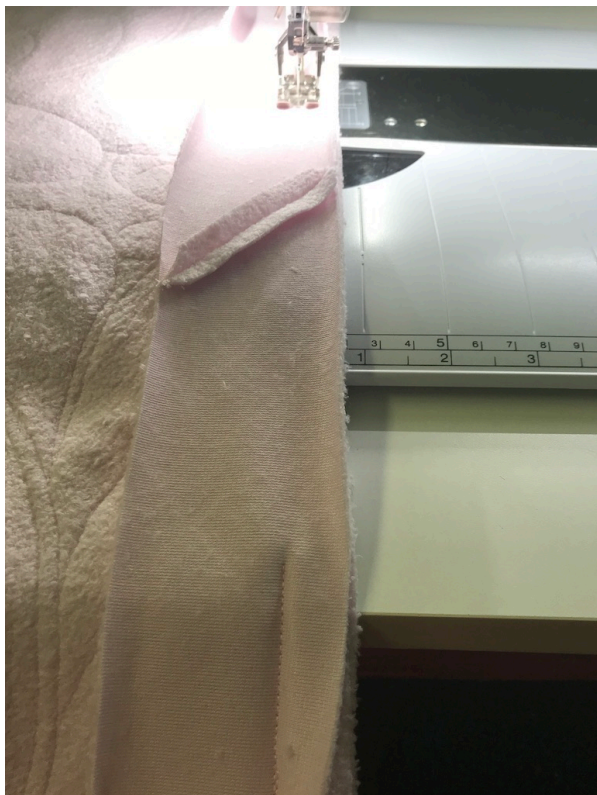
Bring the left piece of binding to the middle of the opening and fold it down on a 45 degree angle. Bring the right piece of binding across and over lap it on top of the left piece. Make sure there is no slack in either of the pieces. Put a pin in only the top 2 layers to hold them together.



Open up the 2 layers (leaving the pin in place). They will form a cross. Sew them together on the diagonal.



Trim seam allowance to $\frac{1}{4}$ ". Finish sewing the binding strip to the back of the quilt to close up the opening.



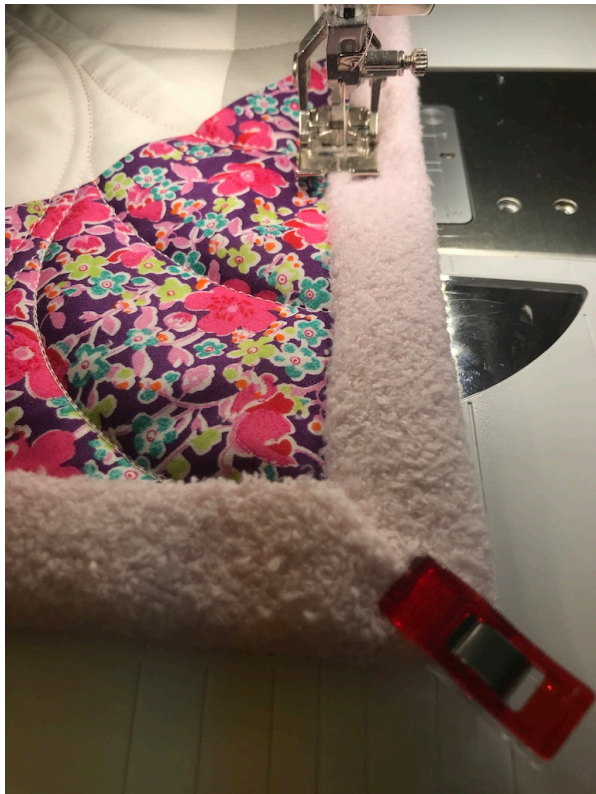
Change your stitch settings to a zig zag stitch. Make sure your top thread and bobbin thread are the same colour as your fireside. I use the pre set width and length on my machine. Test a scrap to make sure you are happy with the settings for your machine.



Fold the binding from the back around to the front. If your 5/8" seam allowance is accurate the edge of the binding should just cover the stitching row. Start sewing at the edge of the binding, trying to keep the stitches on the fireside.



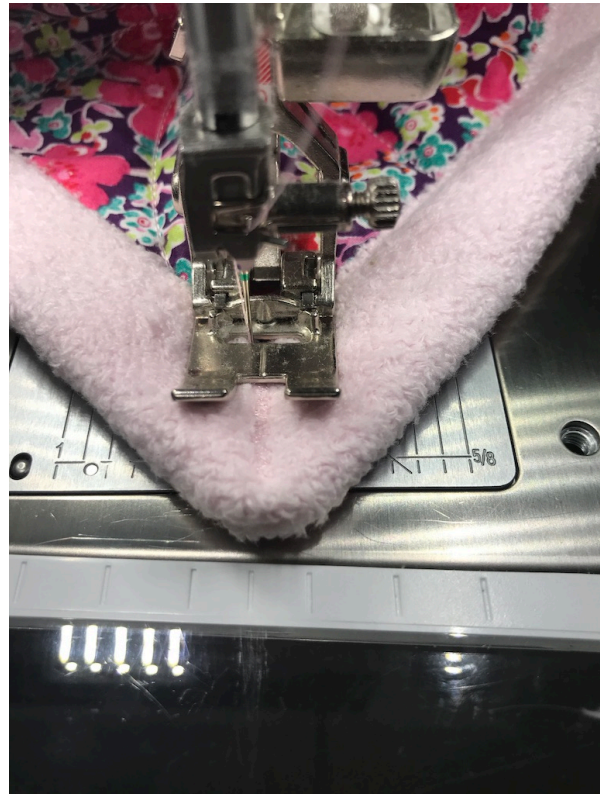
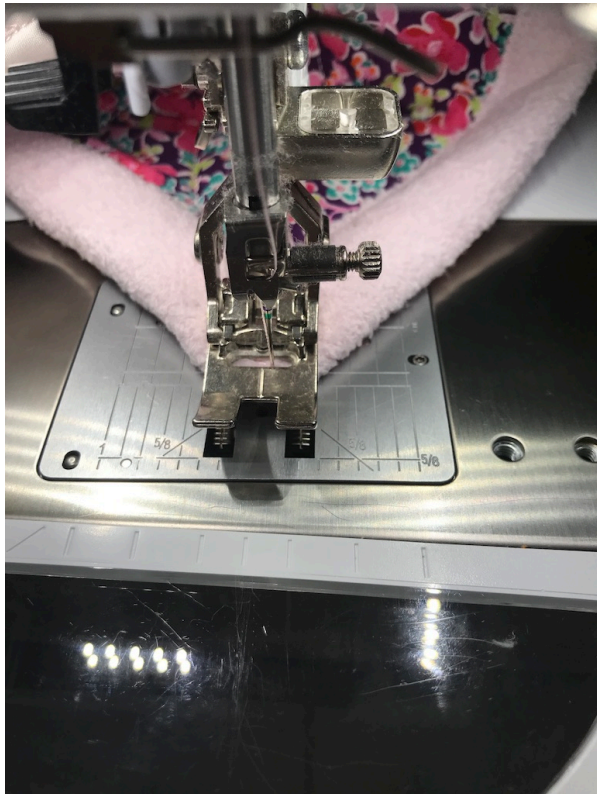
As you approach the corner fold the binding to make a nice mitered corner. I use a clip to hold it snug as I sew up to it.



As I sew up to the corner I continue sewing until I have caught the folded piece of binding. With the needle still down, I pivot and sew out toward the corner.



Once you reach the corner, reverse and sew back to the point where you pivoted. Keep the needle down and pivot so that you can continue with the next side.





Continue around the whole quilt until you have finished all 4 corners. Sew about an inch past the start to make sure that your start and end stitches are locked. With accurate seams the zig zag on the back should be right on top of where the binding was folded.





I hope you enjoy the nice soft fireside binding on your quilt!

If you have any questions, please email bluebarnquiltco@icloud.com